

The Jazz Family

Within the Jazz Family, the Tenor5 is the same genre of fixtures you knew as the 1005. The architectural nature of this pocket accent lighting system, available in a flangeless option, presents a clean, unobtrusive integration of multiple sources in an honest, organized fashion that works in a variety of ceilings. The pockets are available in one, two or three headed rectangular apertures or greater multiples in the continuous linear version.

PROJECT: TYPE:
SPECIFIER: DATE:

Key Points (JZT5-4)

Housing

- Extruded aluminum housing available in standard and custom colors for housing and trim flange
- Flange or flangeless
- **TITLE 24** IC Rated/airtight housing approved for use in direct contact with insulation and supports CA Title 24 compliance to JA8 requirements
- **UL** Listed-Damp

Heads

- Fully adjustable heads in single, double and triple configurations available with single or multi-circuit control
- Yoke and source/optic holder ring available in anodized finish or a painted in our array of standard and custom colors. The heat sink is furnished with a black anodized finish, except when ordering a white painted yoke, when the heat sink is furnished with a clear anodize.
- Pull down yoke available as an accessory when additional pan and tilt are required.

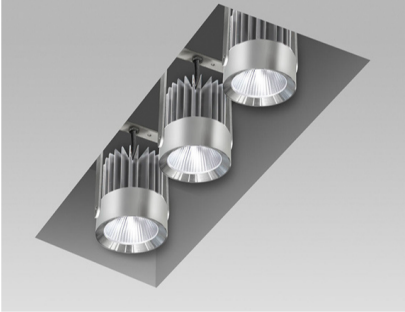
Sources / Optics

- Up to 1525 delivered lumens
- 4 beam spreads available - 10°, 20°, 36° and 60°
- 2700K, 3000K, 3500K, 4000K, Ambient Dim (AD), or Tunable White (TW)
- <2 MacAdam Steps (<2 SDCM)
- 90+ CRI, 60+ R9 Standard, 95+ CRI, 90+R9 available with Ambient Dim option
- **TITLE 24** Source supports California Title 24 to JA8 Requirements in most combinations
- L87B3>55,000 hours at 40°C Ambient (for fixed White)

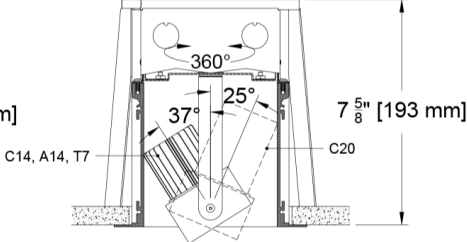
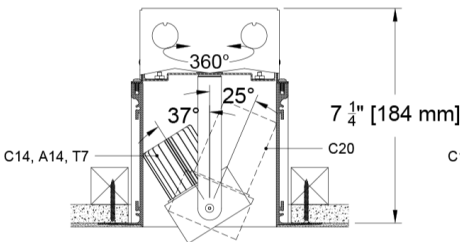
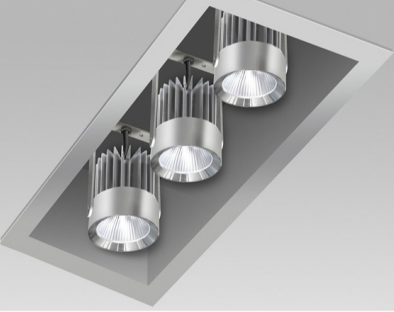
Drivers

- Flicker Free to IEEE 1789-2015 available with EldoLED and TruPhase™ selections
- 1% dimming standard
TruPhase™ Dimming to 0.1% available
- Universal 120-277v
- Integral drivers for TruPhase™, 0-10 or Lutron Ecosystem.

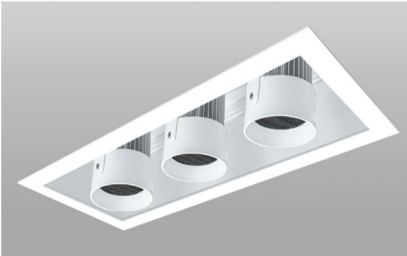
4.5"- 3 Head (Flangeless)



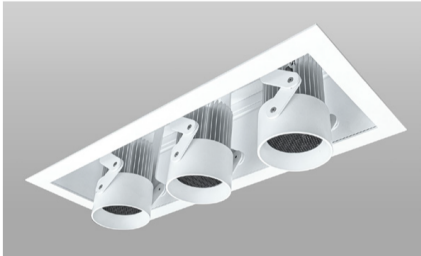
4.5"- 3 Head (Flanged)



Note: Due to deeper heat sink, the C20 source is limited to 25° tilt in some orientations



Standard Yoke



Pull Down Yoke (Select PY in Accessories)

Aperture Options



1 Head Flangeless (4.5"x4.5")

1 Head Flanged (4.5"x4.5")

2 Head Flangeless (4.5"x9")

2 Head Flanged (4.5"x9")

Beamspreads			15°				20°				36°				60°			
Source		System watts (W)	Delivered Lumens (lm)	Lumens/ Watt	Peak cd	10% Field	Delivered Lumens (lm)	Lumens/ Watt	Peak cd	10% Field	Delivered Lumens (lm)	Lumens/ Watt	Peak cd	10% Field	Deliv. Lumens (lm)	Lumens/ Watt	Peak cd	10% Field
SINGLE HEAD	Citizen C14	14	1073	77	5515	39°	1104	79	3832	49°	1082	78	1761	76°	Consult factory for photometry			
	Citizen C20	21	1467	71	7627	39°	1525	74	5311	49°	1502	73	2418	76°				
	Ambient Dim A14	15	750	50	4868	34°	752	50	2910	45°	758	50	1272	74°				
	Tunable White 1840	10	443	43	2469	33°	456	45	2008	41°	470	46	802	77°				
	Tunable White 2765	10	573	58	3221	33°	588	59	2547	41°	581	59	965	78°				

All measurements are delivered lumens based on 3000K unless otherwise noted below. See full Photometric Table below. Ambient dim measured at full output. Tunable White measurements at mid-point of CCT range (2700k for 1840 and 4500k for 2765 source). Data is based upon a single head aimed at 0°. Multiple heads will deliver more light and will need to be accounted for individually in calculations.

Ordering Codes

PROJECT: SPECIFIER:
DATE: TYPE: QUANTITY:

Ordering Code Example: JZT5-4-2-AF-C20-30-36-E1-2C-P16-A01-91L-97L

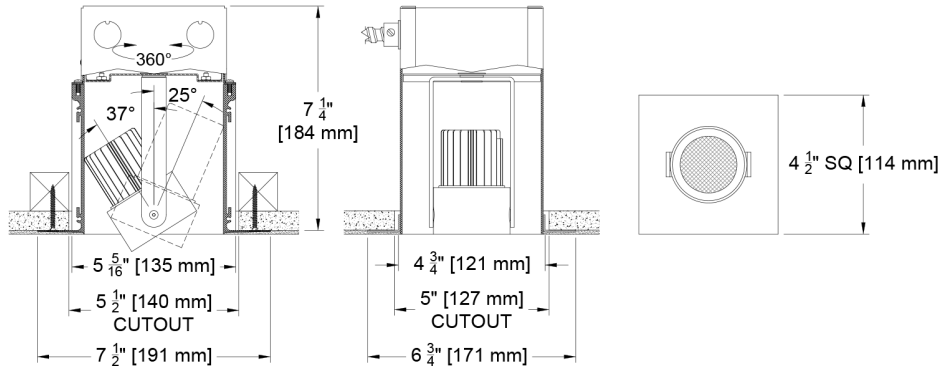
FIXTURE	HEADS	MOUNTING	SOURCE / WATTS	CCT	BEAM	DRIVER / CONTROL	CIRCUITS	HOUSING FINISH	HEAD FINISH	ACCESSORIES
JZT5-4										
Tenor5-4	1 1 head	Flanged Housings	Citizen	27 2700K	15 Spot	C1 0-10 1.0%, UNV (120-277V) linear	1C 1 Circuit	B Black Paint	A01 Black Anodize	Reflector (lamp) Media
	2 2 head	AF ●● Flanged Airtight/IC	C14 ●● 15W 1104Lm* 90+CRI, 60+R9	30 3000K	20 Spot	C2 ELV/Triac 1.0%, (120V) linear	#C (# of circuits must be equal to or less than the # of heads)	W White Paint	A32 Clear Anodize	91L Solite*
	3 3 head	Flangeless Housings	C20 ●● 21W 1525Lm* 90+CRI, 60+R9	35 3500K	36 Flood	LD Digital Ecosystem* 1.0%, UNV (120-277V) ECO Hi-Lume SoftOn/Fade-to-Black LDE1		PXX Specialty Paint Color*	AXX Specialty Anodize Color*	XXL Other Reflector (lamp) Media*
		AP ●● Plaster Airtight/IC	Ambient Dim™	40 4000K	60 Wide Flood	TR2 TruPhase™ 0.1%, (100-277V) Up to 20W Forward and Reverse compatible Phase Dimming 2 Dimming Curves: Linear/Logarithmic Static White & Ambient Dim only		P01-P15	A1-A36	97L Black Hexcel Louver*
		Universal	A14 ●● 15W 752Lm* 95+CRI, 90+R9 3000 to 1900K	AD 1900-3000K	Tunable white options not available for 15°	EldoLED		C Custom/RAL*	AMXX Specialty Matte Anodize Color*	Other
		AU ●● Universal IC/Airtight*	Ink™	Ink™		E1 0-10 0.1%, UNV (120-277V) log		*See Finish Guide	W White Paint^	PY Pull Down Yoke
		●● Supports California Title 24 compliance to JA8 requirements	T7 ●● 10W 588Lm** 90+CRI, 70+R9 Tunable White+	1840 1800-4000K Tunable White*		E2 DALI-2 0.1%, UNV (120-277V) log		FINISH GUIDE LINK	PXX Specialty Paint Color*	Controls
			●● Supports CA Title 24 compliance to JA8 Requirements	2765 2700-6500K Tunable White		E3 0-10 0.1%, UNV (120-277V) linear			P01-P15	ATH Lutron Athena Wireless Node Must be used with E2 driver
			*Based on 20°	* 15° beamspread not compliant with California Title 24		Ink™			C Custom/RAL#*	* See Lens Accessory Guide
			** Based on 20° Beam & 2765 CCT			CA Wireless BLE 0.1%, UNV (120-277V) log Casambi			* See Finish Guide	^ For Pull-down Yoke accessory refer to Configurations Page for details, dimensions and head movements.
			+LTT or EldoLED driver selection required and will be supplied with 2 Channel version			* remote driver only			^ Furnished with clear anodized heat sink	LENS ACCESSORY VISUAL GUIDE LINK
									FINISH GUIDE LINK	

Ceiling Cutouts and Dimensions

4.5"- 1 Head Flangeless Housing

Plaster Airtight / IC (AP)

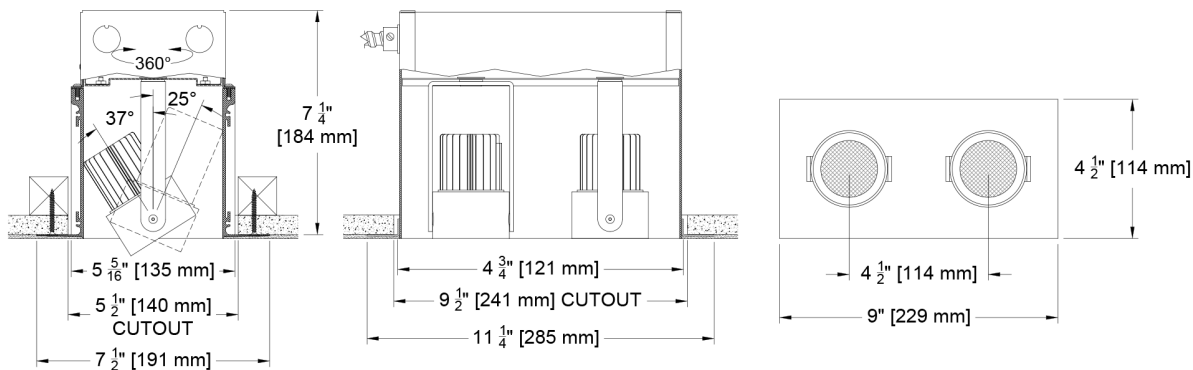
(JZT5-4-1-AP-)



4.5"- 2 Head Flangeless Housing

Plaster Airtight / IC (AP)

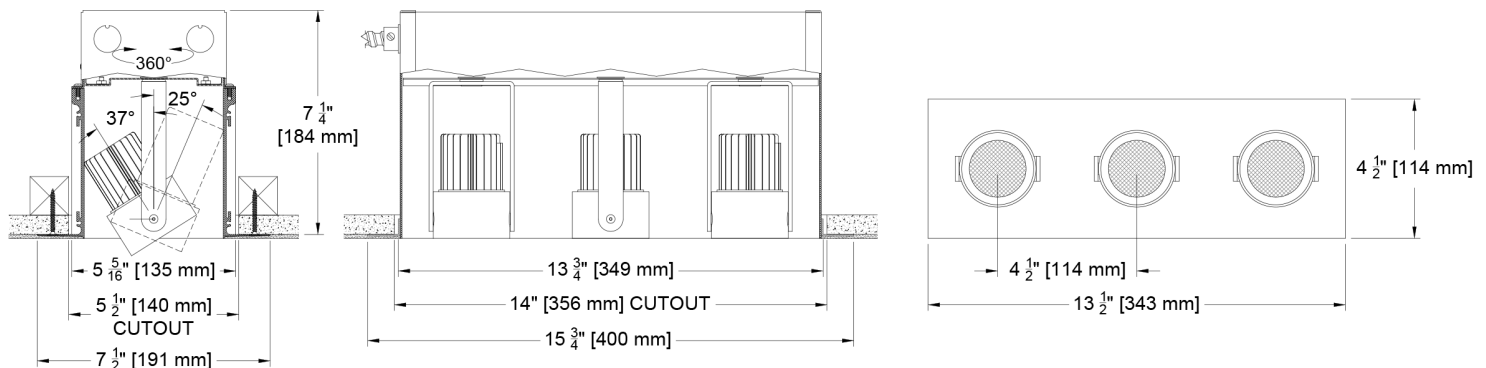
(JZT5-4-2-AP-)



4.5"- 3 Head Flangeless Housing

Plaster Airtight / IC (AP)

(JZT5-4-3-AP-)



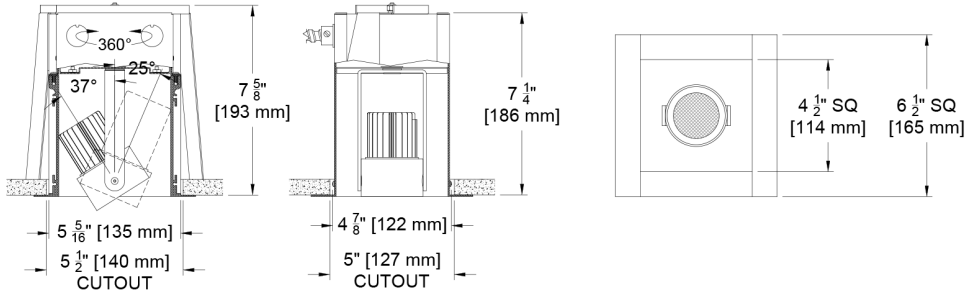
Ceiling Cutouts and Dimensions

4.5"- 1 Head Flange Housing

Flanged Airtight / IC (AF)

(JZT5-4-1-AF)

Note: For ceilings greater than 1"
consult factory for an alternate
mounting bracket.

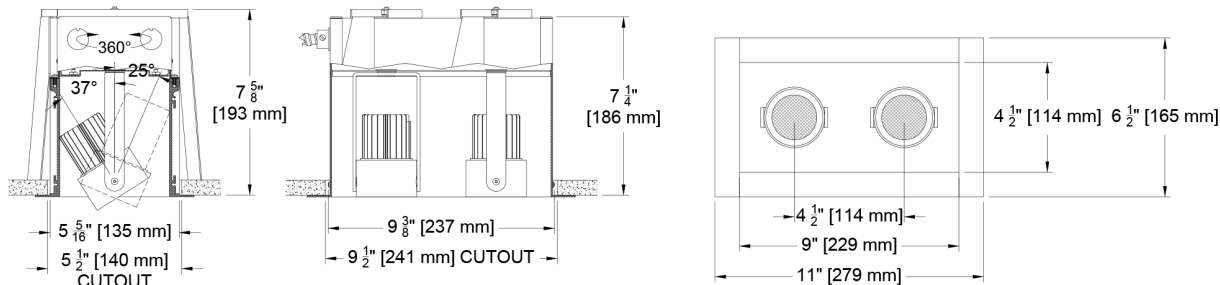


4.5"- 2 Head Flange Housing

Flanged Airtight / IC (AF)

(JZT5-4-2-AF)

Note: For ceilings greater than 1"
consult factory for an alternate
mounting bracket.

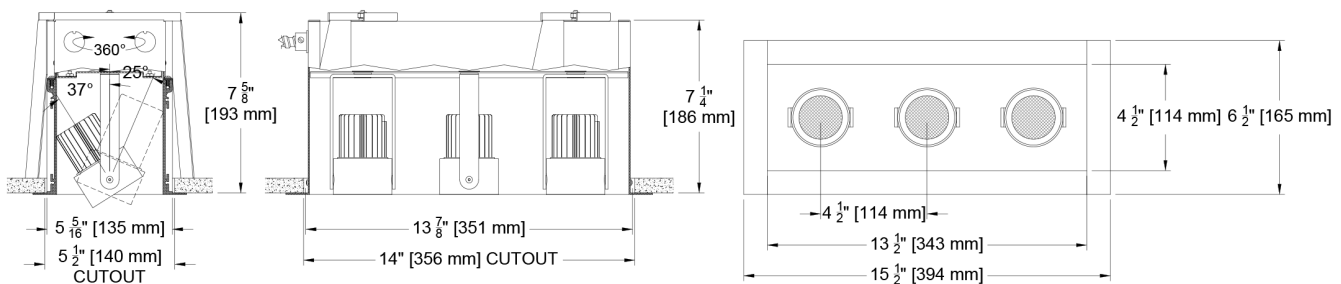


4.5"- 3 Head Flange Housing

Flanged Airtight / IC (AF)

(JZT5-4-3-AF-)

Note: For ceilings greater than 1"
consult factory for an alternate
mounting bracket.

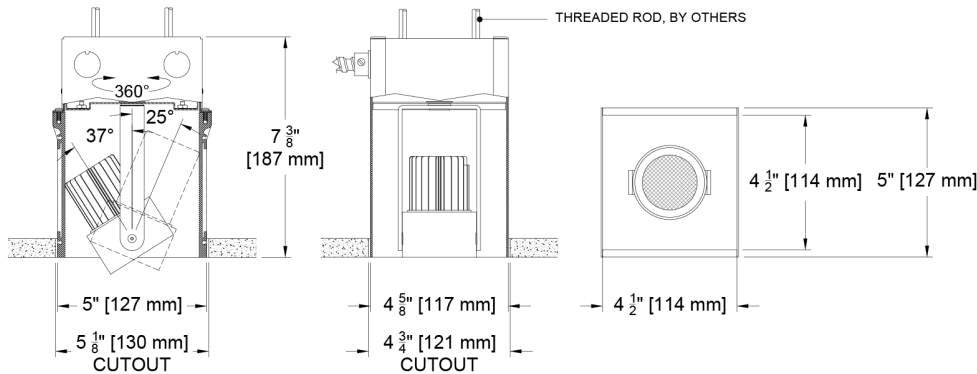


Ceiling Cutouts and Dimensions

4.5"- 1 Head Flangeless Housing

Universal Airtight / U / AU

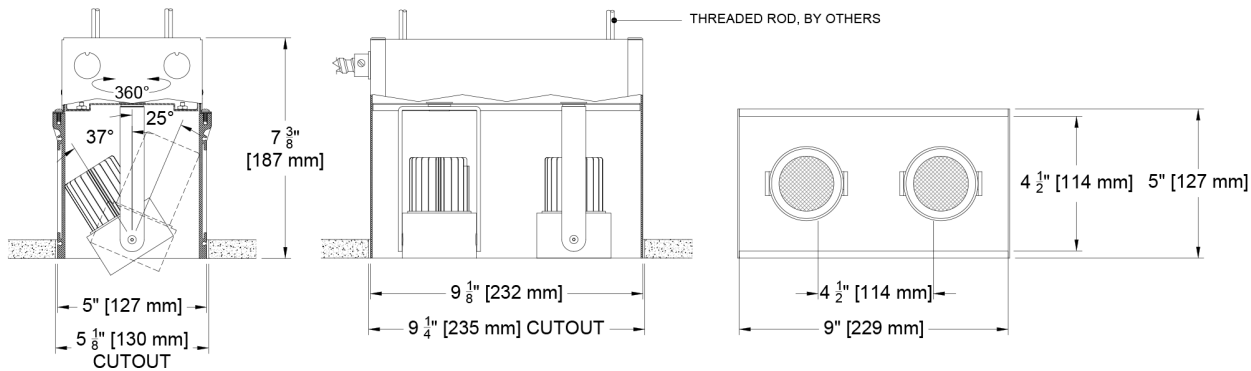
(JZT5-4-1-AF)



4.5"- 2 Head Flangeless Housing

Universal Airtight / U / AU

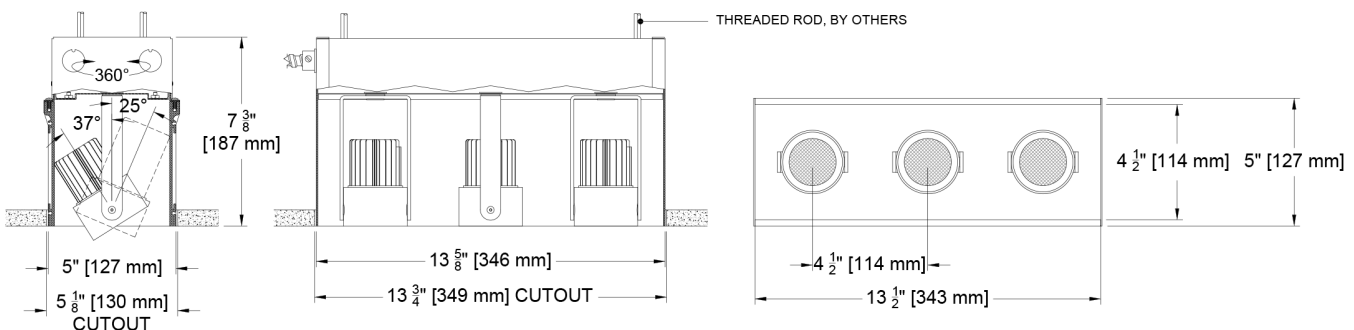
(JZT5-4-2-AF)



4.5"- 3 Head Flangeless Housing

Universal Airtight / U / AU

(JZT5-4-3-AF-)



Tenor5 4" (114mm)

Formerly 1005 4"

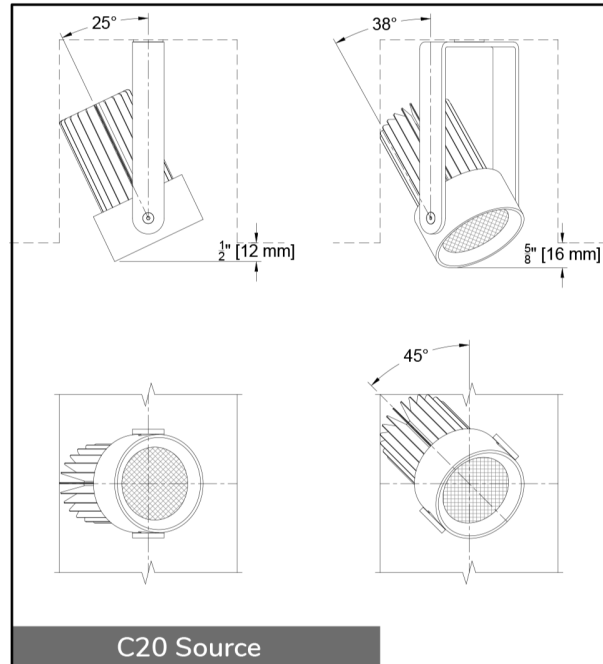
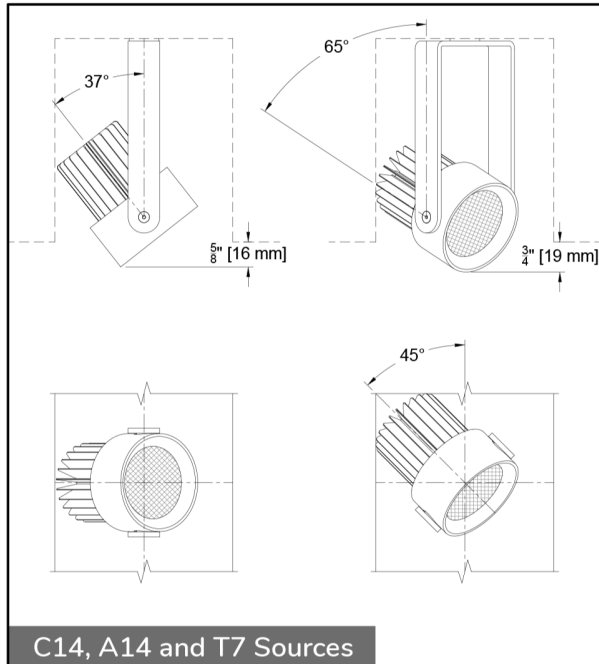
Recessed Rectangular Pocket Multiple Adjustable Accent Lights

Configurations

Standard Yoke/Pull Down Yoke

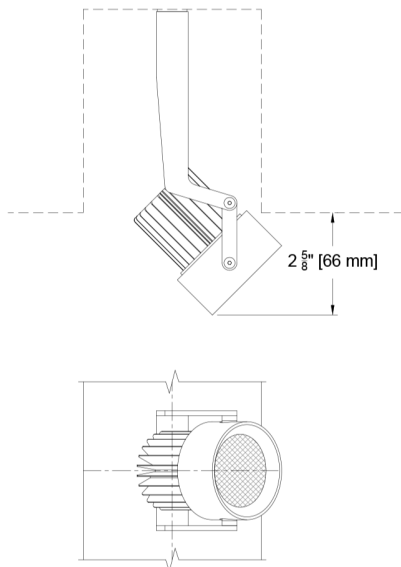
Standard Yoke

C14, A14, C20 AND T7 SOURCES



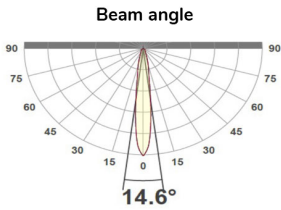
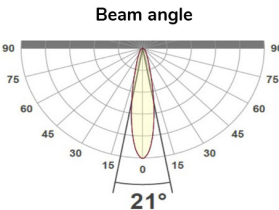
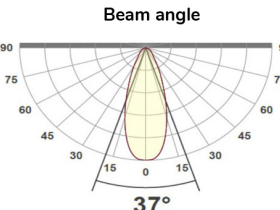
Pull Down Yoke - Full Adjustability

C14, A14 AND T7 SOURCES (See Accessories and select PY)



Photometric Table

All data is based from goniometer measurements of production representative product. All lumen values can vary +/- 10% from LED manufacturer rated flux range. All measurements are delivered lumens based on 3000K unless otherwise noted below. Data is based upon a single head aimed at 0°. Multiple heads will deliver more light. Ambient dim measured at full output. Tunable White measurements at mid-point of CCT range (2700k for 1840 and 4500k for 2765 source). ISO cd Plots based upon C20 Source.

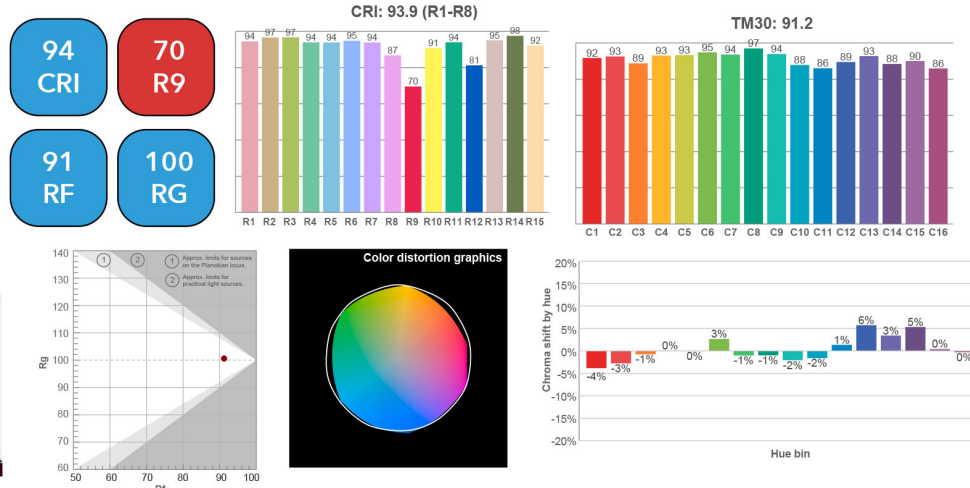
Beamspreads			15°				20°				36°				60°				
Source			System watts (W)	Delivered Lumens (lm)	Lumens/ Watt	Peak cd	10% Field	Delivered Lumens (lm)	Lumens/ Watt	Peak cd	10% Field	Delivered Lumens (lm)	Lumens/ Watt	Peak cd	10% Field	Deliv. Lumens (lm)	Lumens/ Watt	Peak cd	10% Field
SINGLE HEAD	Citizen C14	14	1073	77	5515	39°	1104	79	3832	49°	1082	78	1761	76°	Consult factory for photometry				
	Citizen C20	21	1467	71	7627	39°	1525	74	5311	49°	1502	73	2418	76°					
	Ambient Dim A14	15	750	50	4868	34°	752	50	2910	45°	758	50	1272	74°					
	Tunable White 1840	10	443	43	2469	33°	456	45	2008	41°	470	46	802	77°					
	Tunable White 2765	10	573	58	3221	33°	588	59	2547	41°	581	59	965	78°					
CCT Multiplier															Consult factory for photometry				
CCT	Citizen																		
2700	0.95																		
3000	1.00																		
3500	1.02																		
4000	1.03																		
All measurements are delivered lumens based on 3000K unless otherwise noted below. Ambient dim measured at full output. Tunable White measurements at mid-point of CCT range (2700k for 1840 and 4500k for 2765 source). ISO cd Plots based upon C20 Source. Refer to photometry tab on product page for exact ICO cd plot and IES files. Data is based upon a single head aimed at 0°. Multiple heads will deliver more light and will need to be accounted for individually in calculations. The following combinations do not meet CA Title 24 JA8 requirements: Tunable White (1840)-15°.																			

Color Data

All data below are delivered lumens. Color and flux information based on goniometer measurements of production representative product. All values can vary +/- 10% from LED manufacturer data range as listed on their datasheet.

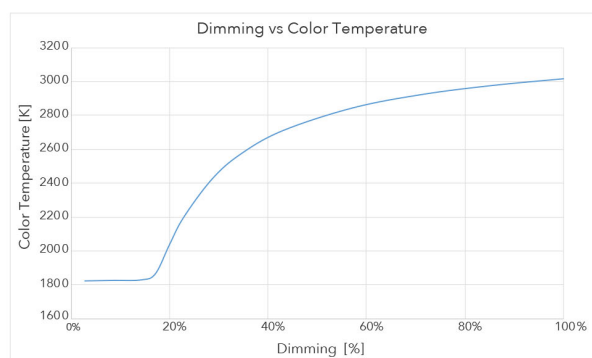
Citizen Source C14, C20

- <2 MacAdam Ellipse (<2 SDCM)
- 90+ CRI and RF
- 60+R9, Hue Bin 1

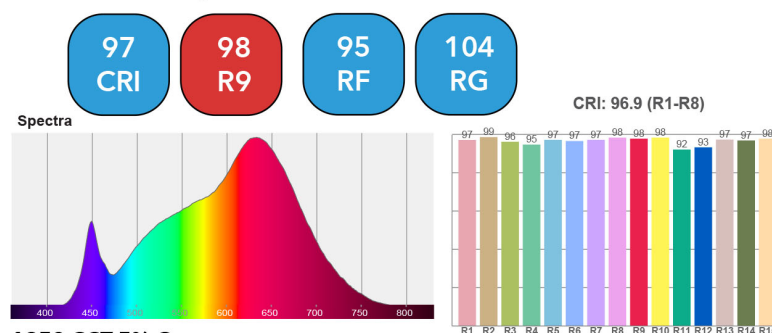


Ambient Dim Source A14 (AD - 3000k to 1900k)

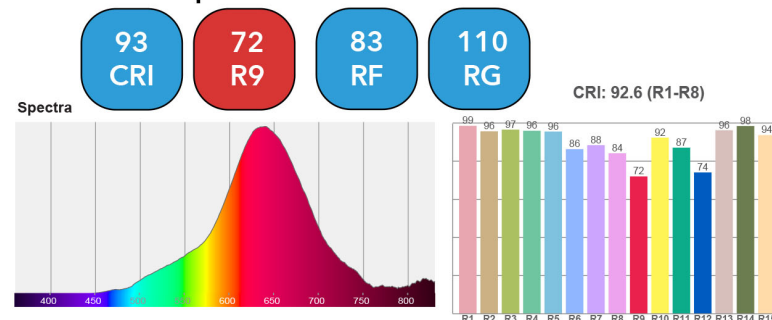
- <3 MacAdam Ellipse (<3 SDCM)
- 95+ CRI and RF
- 90+R9, Hue Bin 1
- Follows Black Body Locus through dimming range



3000 CCT Full Output



1850 CCT 5% Output



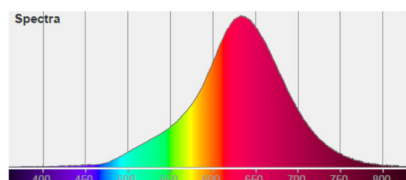
Tunable White Source T7 - CCT 1840 (1800k to 4000k)

- <3 MacAdam Ellipse (<3 SDCM)
- 94 CRI average across all CCTs
- 76 R9 average across all CCTs
- Available in both wired or wireless control

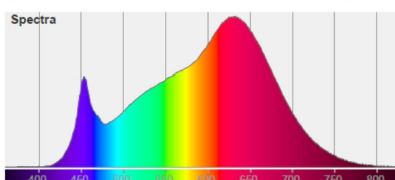
Color Temp	TUNABLE WHITE - 1800-4000K						
	1800	2200	2500	2700	3000	3500	4000
System Watts	10	10	10	10	10	10	10
Delivered Lumens	352	402	435	456	500	530	530
Luminaire Efficiency	37	42	46	48	53	56	56

Flux and Color data based on 20° measurement at 2700k.
All other values are extrapolated from actual and analytical tests

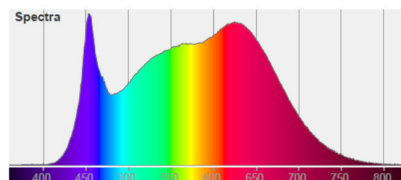
Spectral Power Distributions at all listed CCTs available upon request



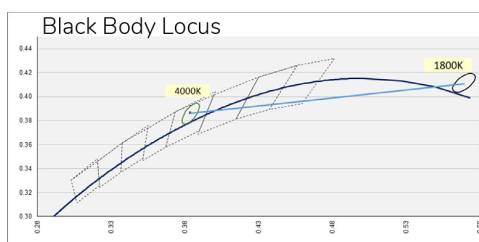
1800K



3000K



4000K



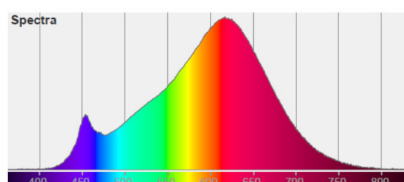
Tunable White Source T7 - CCT 2765 (2700k to 6500k)

- <3 MacAdam Ellipse (<3 SDCM)
- 94 CRI average across all CCTs
- 96 R9 average across all CCTs
- Available in both wired or wireless control

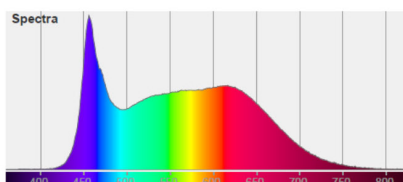
Color Temp	TUNABLE WHITE - 2700-6500K								
	2700	3000	3500	4000	4500	5000	5500	6000	6500
System Watts	10	10	10	10	10	10	10	10	10
Delivered Lumens	553	570	588	589	588	587	586	585	591
Luminaire Efficiency	58	60	62	62	62	62	62	62	62

Flux and Color data based on 20° measurement at 4500k. All other values are extrapolated from actual and analytical tests

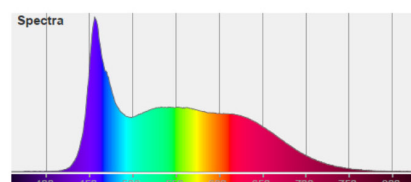
Spectral Power Distributions at all listed CCTs available upon request



2700K



5000K



6500K

